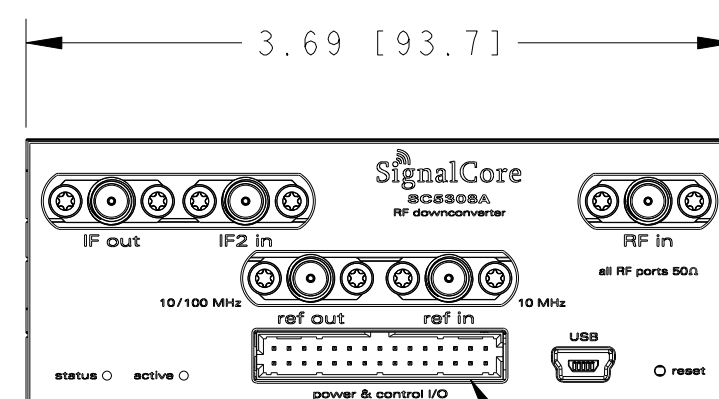


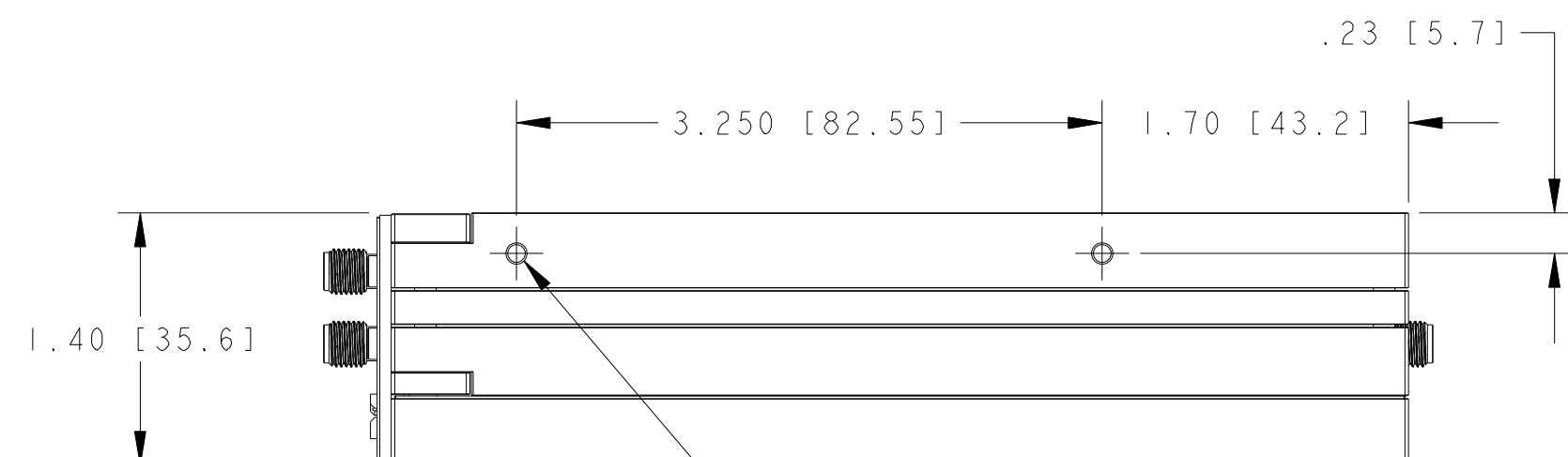
 M3 X 0.5 THREADED HOLE
0.16 [4.1] DEEP
4 PLACES



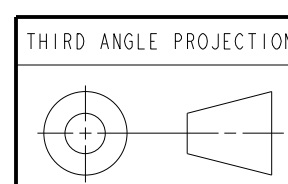
2 POWER AND CONTROL I/O CONNECTION IS A DUAL ROW, 30 POSITION MOLEX MILLIGRID CONNECTOR, MOLEX P/N 87833-3020. MATING CONNECTOR OPTIONS (AVAILABLE THROUGH STANDARD ELECTRONIC COMPONENT DISTRIBUTORS) ARE:

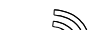
- 1) DISCRETE WIRE DUAL ROW CRIMP HOUSINGS (MOLEX P/N 51110-3050 OR 51110-3051) WITH FEMALE CRIMP TERMINALS (MOLEX P/N 50394-805X, 50394-8X00, OR 87396-X051). THE 'X' IN THE PART NUMBER DENOTES CHOICE OF CONTACT PLATING. SEE MOLEX DATASHEETS FOR AVAILABLE OPTIONS.
- 2) DUAL ROW IDT RIBBON CABLE CONNECTOR (MOLEX P/N 87568-306Y, 87568-304Y, OR 87568-309Y). THE 'Y' IN THE PART NUMBER DENOTES CHOICE OF CONTACT PLATING. USE OF A STRAIN RELIEF IS RECOMMENDED (MOLEX P/N 87569-1030). SEE MOLEX DATASHEETS FOR AVAILABLE OPTIONS.

1 DIRECT THERMAL ATTACHMENT TO THE TOP SURFACE OF THE RF MODULE IS THE PREFERRED MOUNTING METHOD.



—M3 X 0.5 THREADED HOLE
0.14 [3.5] DEEP
2 PLACES
MIRRORED ON OTHER SIDE OF MODULE



<p><u>UNLESS OTHERWISE SPECIFIED</u></p> <p>ALL DIMENSIONS SHOWN IN INCHES [MILLIMETERS]</p> <p>TOLERANCES ARE:</p> <p>.XX [0.X] ±.01 [0.25]</p> <p>.XXX [0.XX] ±.005 [0.13]</p> <p>ANGLES: ±2°</p> <p>MATERIAL</p> <p>FINISH</p>	<p><u>REVISION NOTES</u></p> <p>1. INITIAL RELEASE.</p>		<p><u>DATE</u></p>		<p> SignalCore Inc.</p> <p>AUSTIN, TEXAS</p>	
					<p>TITLE</p> <p>SC5308A, 6 GHz DOWNCONVERTER, CORE MODULE, CUSTOMER DRAWING</p>	
					<p>SIZE</p> <p>C</p>	<p>CAGE CODE NO.</p> <p>6CG47</p>
					<p>DATE OF DRAWING</p> <p>04-26-16</p>	<p>REV</p> <p>1</p>
				<p>SCALE:</p> <p>1/1</p>	<p>DO NOT SCALE DRAWING</p>	
				<p>SHEET</p> <p>OF</p>		