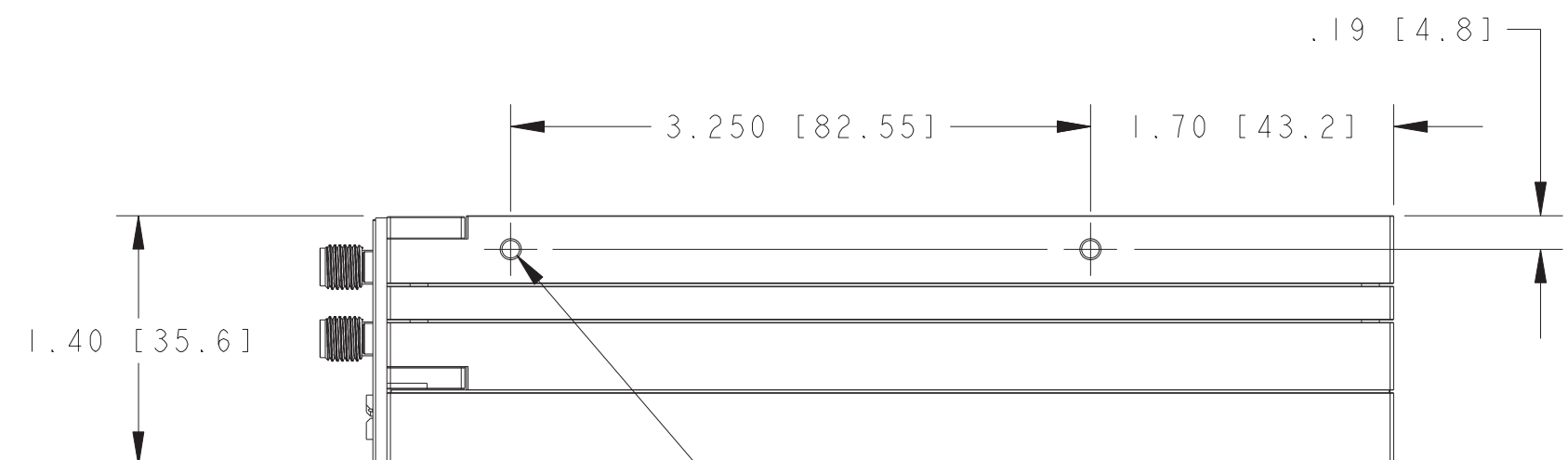
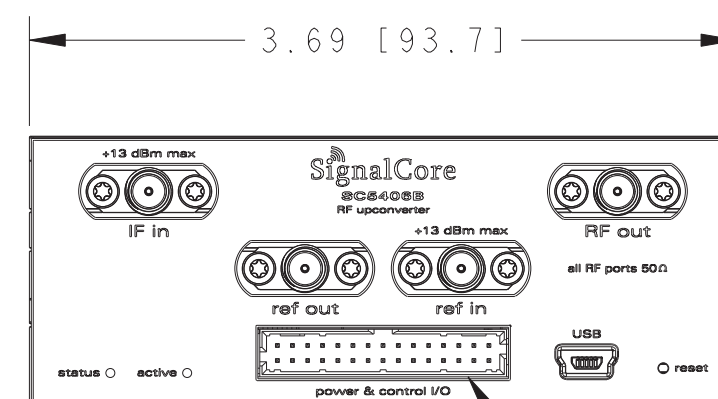


 M3 X 0.5 THREADED HOLE
 0.16 [4.1] DEEP
 4 PLACES



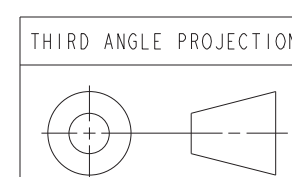
M3 X 0.5 THREADED HOLE
0.14 [3.5] DEEP
2 PLACES
MIRRORED ON OTHER SIDE OF MODULE

2 POWER AND CONTROL I/O CONNECTION IS A DUAL ROW, 30 POSITION MOLEX MILLIGRID CONNECTOR, MOLEX P/N 87833-3020. MATING CONNECTOR OPTIONS (AVAILABLE THROUGH STANDARD ELECTRONIC COMPONENT DISTRIBUTORS) ARE:

- 1) DISCRETE WIRE DUAL ROW CRIMP HOUSINGS (MOLEX P/N 51110-3050 OR 51110-3051) WITH FEMALE CRIMP TERMINALS (MOLEX P/N 50394-805X, 50394-8X00, OR 87396-X051). THE 'X' IN THE PART NUMBER DENOTES CHOICE OF CONTACT PLATING. SEE MOLEX DATASHEETS FOR AVAILABLE OPTIONS.
- 2) DUAL ROW IDT RIBBON CABLE CONNECTOR (MOLEX P/N 87568-306Y, 87568-304Y, OR 87568-309Y). THE 'Y' IN THE PART NUMBER DENOTES CHOICE OF CONTACT PLATING. USE OF A STRAIN RELIEF IS RECOMMENDED (MOLEX P/N 87569-1030). SEE MOLEX DATASHEETS FOR AVAILABLE OPTIONS.

 DIRECT THERMAL ATTACHMENT TO THE TOP SURFACE OF THE RF MODULE IS THE PREFERRED MOUNTING METHOD.

NOTES: (UNLESS OTHERWISE SPECIFIED)



<p>UNLESS OTHERWISE SPECIFIED ALL DIMENSIONS SHOWN IN INCHES [MILLIMETERS]</p> <p>TOLERANCES ARE: .XX [0.X]±.01 [0.25] .XXX [0.XX]±.005 [0.13] ANGLES:±2°</p> <p>MATERIAL</p> <p>FINISH</p>	<p>REVISION NOTES</p> <p>1. INITIAL RELEASE.</p>		<p>DATE</p> <p>08-19-15</p>	<p>SignalCore Inc. AUSTIN, TEXAS</p>			
				<p>TITLE</p> <p>SC5406B, 3.9 GHz UPCONVERTER, CORE MODULE, CUSTOMER DRAWING</p>			
				<p>SIZE</p> <p>C</p>	<p>CAGE CODE NO.</p> <p>6CG47</p>	<p>DATE OF DRAWING</p> <p>08-19-15</p>	<p>REV</p> <p>1</p>
				<p>SCALE:</p> <p>1/1</p>	<p>DO NOT SCALE DRAWING</p>	<p>SHEET</p> <p>1</p>	<p>OF</p> <p>1</p>